

Update on Fishery Farms around the Chinese Coast.

Ingosstrakh' s P&I Correspondent in China Messrs. Oasis P&I, keeps us in loop of update concerning the fishery Farms around the Chinese Coast.

Update on Fishery Farms around the Chinese Coast

Ships have been reminded to watch out for the fishery farms when calling Chinese ports, especially those where claims for fishery farm damages caused by ships have been frequent.



Coastal map with ports where fishery farm claims occur frequently

Below you may find summarized the latest situation prepared by Oasis P&I regarding fishery farms at these ports for the reference of the ships that plan to call these ports.

Dalian

In the map below, you may find highlighted in red the area where recent fishery farm claims nearby Dalian occurred, defined by the following eight coordinates:

38°53.513'N, 122°03.333'E

38°53.988'N, 122°02.907'E

38°54.754'N, 122°03.423'E

38°55.787'N, 122°04.449'E

38°57.355'N, 122°11.263'E

38°56.963'N, 122°11.69'E

38°55.507'N, 122°9.512'E

38°53.405'N, 122°5.48'E

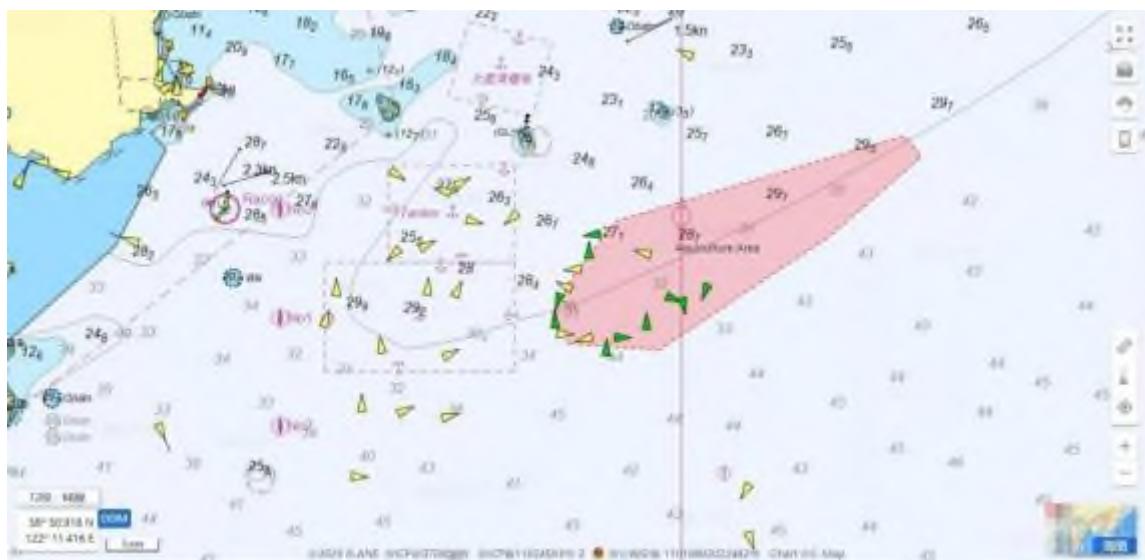


Illustration of fishery farm areas nearby Dalian

This area is located to the east of Dayaowan anchorage, where ships usually anchor before calling Dalian or ports nearby.

From Oct 2024, AIS reflectors indicating “Aquaculture Area **” for those fishery farms in the waters nearby Dayaowan anchorage were installed, in order to alert passing by ships. However, it should be noted that not all fishery farms are installed with such devices.

Tianjin

Most of the fishery farms nearby Tianjin are mudflat aquaculture in shallow water, which have little impact on oceangoing ships. In recent years, a couple of fishery farm claims occurred in the area marked in red in the map below, defined by the following four coordinates:

39°19.570'N, 119°37.725'E

39°19.430'N, 119°38.580'E

39°15.861'N, 119°36.901'E

39°15.973'N, 119°36.160'E



Illustration of fishery farm areas nearby Tianjin

This area is relatively far from the coast and the seawater depth reaches around 20m. Ships proceeding to ports such as Tianjin, Jingtang, Qinhuangdao and Huanghua may pass by this area.

Yantai

According to the navigation alert published by Shandong MSA on 12 Jan 2024, there are numerous fishery farms to the south of the public navigation waterway between Yantai and Weihai, defined by the following four coordinates and highlighted in light green in the map below:

37°38'39" N, 121°38'48" E;

37°39'24" N, 121°56'30" E;

37°34'30" N, 121°45'20" E;

37°33'24" N, 121°38'48" E.

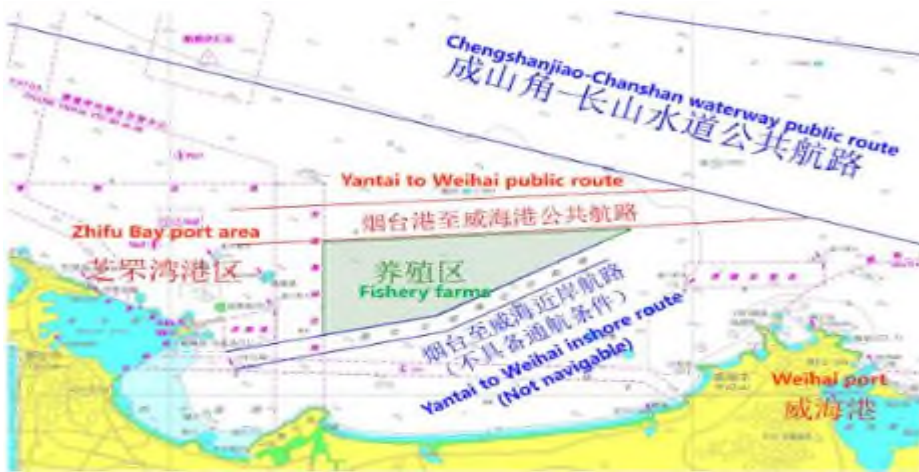


Illustration of fishery farm areas nearby Yantai

Laizhou

A satellite remote sensing monitoring of marine aquaculture for Laizhou ports shows that there are many fishery farms in the area which are very close to the navigation channels and anchorages, as shown in the map below

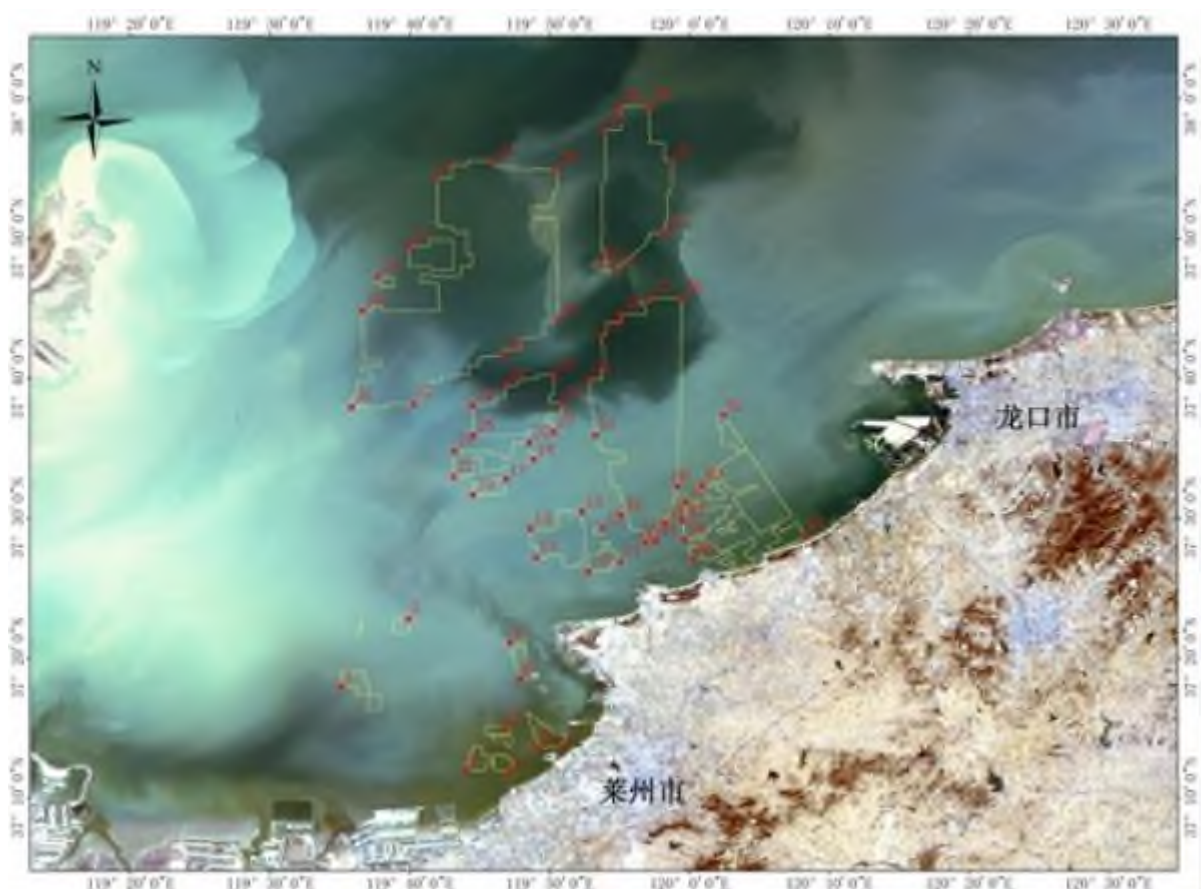


Illustration of fishery farm areas nearby Laizhou

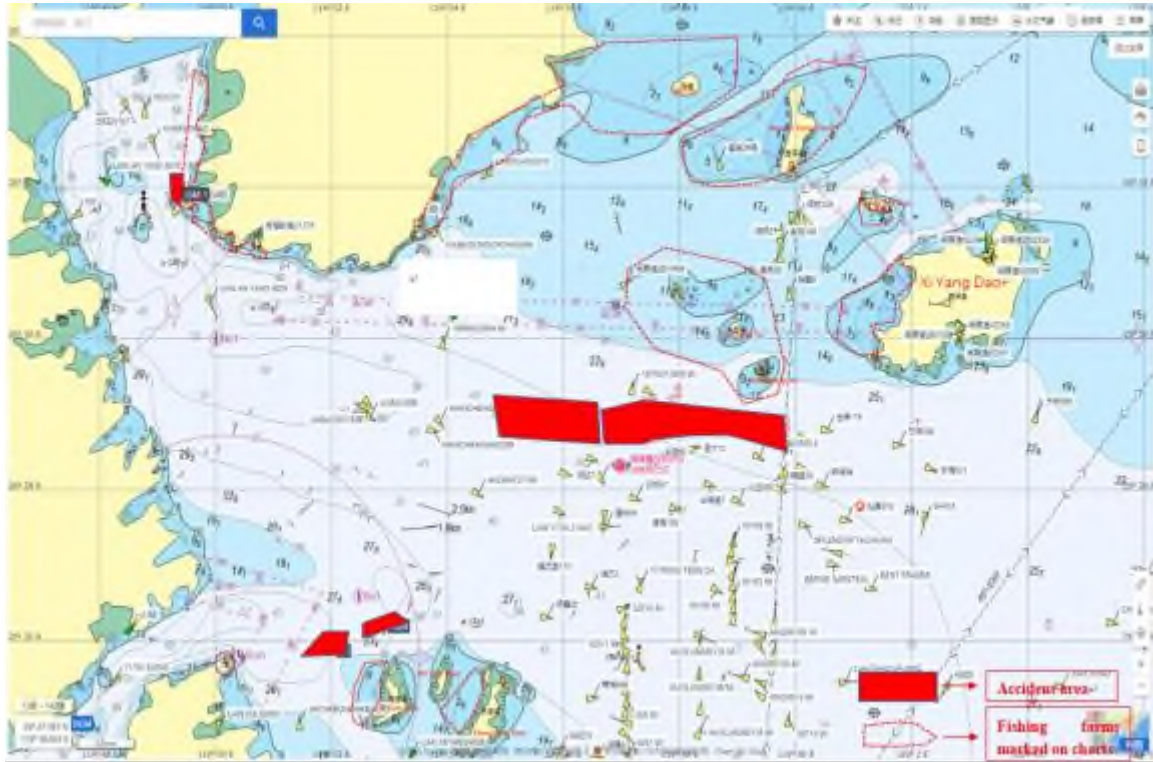
The coordinates for the major fishery farms boundaries are listed as follows:

No.	N (°)	E (°)
1	37.2986	119.5853
2	37.1995	119.7341
3	37.1974	119.7858
4	37.2529	119.7840
5	37.3793	119.6648
6	37.2264	119.8201
7	37.2278	119.8478
8	37.3079	119.7983
9	37.3508	119.7869
10	37.4358	119.8798
11	37.4477	119.9177
12	37.4876	119.8971
13	37.5069	119.8723
14	37.4872	119.8111
15	37.4530	119.8175
16	37.5275	119.7423
17	37.5457	119.7817
18	37.5697	119.8146
20	37.5888	119.8088
21	37.5796	119.7202
22	37.5494	119.7193
23	37.6030	119.8386
24	37.6375	119.8485
25	37.6702	119.8386
26	37.6586	119.7807
27	37.6339	119.7420
28	37.5985	119.7427
29	37.7362	119.8440
30	37.9169	119.8417
31	37.9260	119.7680
32	37.9060	119.6982
33	37.8238	119.6650

34	37.7877	119.6290
35	37.7471	119.6106
36	37.6319	119.5972
37	37.6360	119.6717
38	37.6942	119.7785
39	37.9909	119.9517
40	37.9906	119.9170
41	37.9626	119.8988
42	37.8026	119.8950
43	37.7956	119.9113
44	37.8396	119.9689
45	37.9257	119.9796
46	37.7618	119.9909
47	37.7627	119.9548
48	37.7430	119.9186
49	37.7169	119.8948
50	37.6653	119.8818
51	37.5985	119.8887
52	37.5033	119.9191
53	37.4708	119.9490
54	37.4727	119.9593
55	37.4935	119.9710
56	37.5375	119.9857
57	37.5185	119.9963
58	37.4968	119.9922
59	37.4746	119.9943
60	37.4508	120.0059
61	37.4781	120.1385
62	37.6224	120.0410
63	37.5391	120.0157

Ningde & Kemen

In recent years, more and more fishery farm claims occurred in Ningde and Kemen. The map below shows the locations of the fishery farms which have been collected from local sources as well as from cases handled by Oasis P&I in these areas.



Recommendations to ships:

- 1. Please note that the above-mentioned locations of fishery farms are not meant to be exhaustive, accurate or permanent, as they are seasonal and can change from time to time without notice.** Therefore, ships are strongly suggested to collect the latest fishery farm information from the local agent in advance, check the updated chart and navigation alerts issued by local authorities, and maintain enhanced lookout when navigating in these areas.
2. It is also strongly recommended that ships navigate in the official recommended channels when accessing these ports. Generally speaking, the chance for fishery farms to exist in the official channels and customary routes is slim, but this possibility cannot be entirely ruled out. Extra caution is still required.

3. If possible, avoid entering into or departing from these ports or anchorages during nighttime or periods of poor visibility.

4. Maintain a proper lookout at all times during navigation, checking AIS and radar while maintaining visual lookout. Many of the fishery farms don't have AIS or radar reflectors; on the other hand, some of the fishing nets are below the water surface and may be difficult to observe visually.

The full text of the circular which is available via the [link](#).